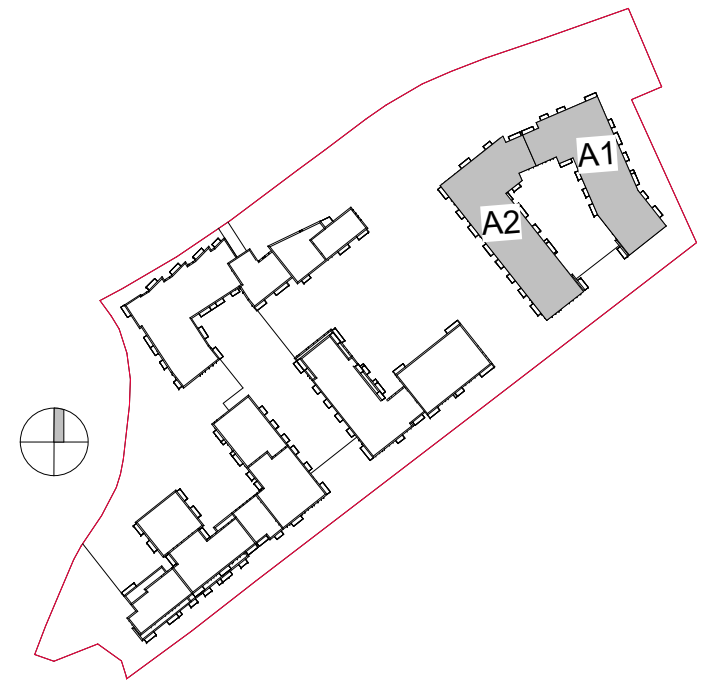


# PLANNING DRAWING



### FLOOR PLAN KEY :

- EH - ENTRANCE HALL
- ST - STORAGE
- HP - HOT PRESS
- KIT/LIV/DIN - KITCHEN + LIVING + DINING ROOM

### AREA TYPES

- 1 BED
- 2 BED (4P)
- 2 BED (3P)
- 3 BED

### Schedule Accommodation-Block A-Level 08

Name	Area	Area Type
A2-0801	66 m <sup>2</sup>	2 BED (3P)
A2-0802	78 m <sup>2</sup>	2 BED
A2-0803	73 m <sup>2</sup>	2 BED
A2-0804	46 m <sup>2</sup>	1 BED
A2-0805	46 m <sup>2</sup>	1 BED
Grand total: 5	310 m <sup>2</sup>	

Rev	Description	Date	Dr by	App by
P08	Full Application Drawings	14/03/22	VF	WP
P07	Draft Full Application Drawings	20/01/22	VF	WP
P06	Draft Full Application Drawings	16/12/21	VF	WP
P05	Pre-Application Submission	25/05/21	VF	WP
P04	Draft Pre-Application Drawings	06/05/21	VF	WP
P03	Draft Drawings for Information	18/03/21	VF	WP
P02	Issued for Information	01/03/21	VF	WP
P01	Ground & Typical Floor issued for Comment	03/02/21	VF	WP

Project Stage

## PLANNING

Client:  
Steeplefield Limited,

Project:  
Greenhills Road, Walkinstown,  
Dublin 12

Drawing Title:  
BLOCK A -L08-EIGHTH FLOOR PLAN

Drawn	Checked	Paper Size	Scale	Date
VF	WP	A1	1:200@A1	02/27/21

Project No.	Drawing No.	Classification	Revision
PE18001	022108		P08

File Name:  
PE18001-CWO-BA-08-DR-A-022108

Status:  
**S3 ISSUED FOR PLANNING**



**1** BLOCK A -L08-EIGHTH FLOOR PLAN

1 : 200